



Newsletter

From the Principal

Term 2 Week 8

Friday, 16 June, 2017

KINDERGARTEN 2018

SCHOOL TOURS

Thursday 8 June, 2017 / 10-10.30am

KINDERGARTEN ORIENTATION

Tuesday 24 October, 2017
Wednesday 1 November, 2017
Thursday 9 November, 2017
all sessions are 10-11am



PHONE 9153 9767
OGILVY STREET, PEAKHURST NSW 2210

As we approach the end of term, staff have been finalising student assessments and writing student reports. Reports will be distributed to all students on Thursday, 29 June. Although we don't have formal parent teacher interviews this term, you are welcome to discuss your child's progress with teachers at any time of the year. We kindly ask that you make an appointment to see class teachers.

P&C DONATION

A huge THANK YOU goes out to ALL FAMILIES who have contributed in some way or form to our fundraising efforts over the past year. At our last P&C meeting, the P&C very generously donated \$20,000 to the school which will be used to purchase flexible learning furniture items for each class.



SPELLATHON

One of our major fundraisers is the School Spellathon. This is where each stage has a set of allocated spelling words that the students are challenged to learn, seeking sponsorship on the number of words they spell correctly on Spellathon Day, which is Friday, 28th July. Sponsorship cards will be distributed before the school holidays. We appreciate your support and donations for this event. All money raised will go towards upgrading furniture and resources for our kids (Please note that this is a different event to the Premier's Spelling Bee Final which will be held next week at the school).

LOST PROPERTY

This week staff and students discussed the growing amount of lost property in the playground. All classes have their own tub in the playground and students have been encouraged to sit near their tub so they have easy access to it, placing their lunch boxes and drink bottles in their tub after eating time. This was also discussed at our Flag Assembly this week. We ask that you label all of your belongings and encourage your children to become more independent in taking responsibility for their belongings. I know as a parent that losing school items is really frustrating. We are trying to ensure simple systems are in place to avoid the unnecessary cost of replacing these items. We appreciate your understanding in this matter and also ask that you refrain from sending expensive drink bottles and lunch boxes to school.



Week 9

- Thur 22 June** Spelling Bee
Sport in Schools
Fri 23 June Rd 4 PSSA

Week 10

- Thur 29 June** Reports Distributed
Cake Stall, Mufti
Sport in Schools
Fri 30 June Rd 5 PSSA
LAST DAY TERM 2

TERM 3

Week 1

- Tue 18 July** Students Return
ATHLETICS
Fri 21 July Rd 6 PSSA

Week 2

- Fri 28 July** Spellathon Day
Rd 7 PSSA

Week 3 EDUCATION WEEK

- Tues 1 Aug** Open Day
Fri 4 Aug Rd 8 PSSA

Week 4

- Mon 7 Aug—** St 3—Canberra
Wed 9 Aug

NAPLAN Online

Next year, NAPLAN (The National Assessment Program - Literacy & Numeracy) will be moving from the traditional pen/pencil and paper assessment to an online assessment. A 'fact sheet' for parents and carers providing further information about this transition is included in this newsletter. This term Mr Brown and Mrs Floratos will be attending a training session on this and next term our school will be participating in a 'readiness test' for NAPLAN. I will be sure to update you all regularly as we transition into NAPLAN Online in 2018.

ATHLETICS CARNIVAL

Following feedback from last years Athletics Carnival, we are finalising plans for what will hopefully be an exciting, fun filled event for all students. Like any school event, we really appreciate the help and support of our parents and grandparents, even if it is for one or two hours. Some of the jobs allocated to parents include: supervision of canteen area, running a small sports station for K-2 activities, assisting teachers with field events, handing out place cards, assisting teachers during lunch breaks etc. All the organisation will be done by the school, we merely need additional manpower on the day. Please advise the office or Mrs Nichols if you are able to assist on the day. Please also note that the payment for the Athletics Carnival must be made this term as the carnival is on the first day back of term 3. This was on your term 2 invoices, giving you ample time to make this payment or pay it off in instalments.

WHO TO CONTACT

Included in this newsletter is a chart to help identify 'who to contact' if you have any concerns about your child or an issue at the school. We are all here to help, however this chart may assist in who you direct your enquiry to. Teachers have also discussed with their classes, the need to report any incidents that happen at school to the playground duty teacher or the class teacher to ensure that any incidents are dealt with promptly. It makes it very difficult to follow up on negative incidents if it is reported to us days or weeks later. Similarly, approaching other students or their parents is not acceptable either. We are proud of our positive, caring school community and would hate to tarnish this reputation over a couple of incidents of parents not following protocol and procedures. As always, I am available to discuss major concerns with families as are our very capable Assistant Principals.

STAFFING UPDATES

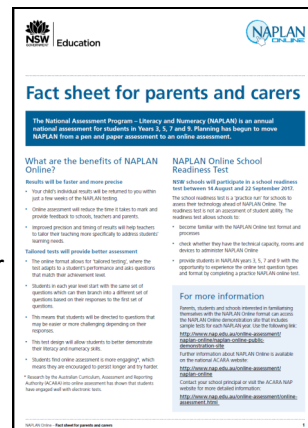


At the end of this term, Mrs Klicek will be taking Maternity Leave as she excitedly anticipates the birth of her first baby. Mr Armiger has been appointed as the class teacher for 1/2E for terms 3 and 4. Mr Armiger has been an excellent casual teacher at our school and we look forward to him joining the team for semester 2. Mr Sanders will also be taking leave for the last seven days of term 2. Mrs Wells will teach 2WS during this time. Next week, our teachers will participate in collaborative planning where they collegially plan their teaching programs together to ensure consistency in every class.

When little people are overwhelmed by big emotions, it's our job to share our calm, not join their chaos. – L.R.Knost

Have a great fortnight!

Tanya Sarafoski



Contacting the School



Concern/Question/Information	Appropriate Contact
Academic progress of child	Arrange interview with class teacher. Any referrals to the school learning and support team must go through the class teacher.
Welfare of own child	Arrange interview with class teacher.
Health issues - minor	Notify class teacher in writing.
Health issues - more serious	Notify school office. Arrange interview with assistant principal or principal.
Administering of medication at school	Notify school office. Medication to be brought to the office in original packaging. Advice from a medical doctor may also be re-
Custody/Court Orders	Arrange interview with principal; provide copies of orders.
Change of address or emergency contact details	Contact office staff and provide proof if required.
Explanation of absence	Explanation in writing to class teacher or phone call or email to school office. Explanation can also be submitted through Skoolbag app.
Application for extended leave (leave longer than 10 school days)	Collect form from office and return to the principal for approval.
Child leaving the school	Notify the class teacher and the school office in writing
Behaviour or actions of a student other than your own child (in class)	Contact your child's class teacher.
Behaviour or actions of a student other than your own child (in the playground)	<p>Contact the Assistant Principal relevant to stage level of your child who will investigate the matter and get back to you within two days.</p> <p>Kindergarten – Year 2: Chris Sanders</p> <p>Years 3&4: Joshua Brown</p> <p>Years 5&6: Mary Floratos</p>
School policy or process	Contact office to arrange interview with Principal, providing to office staff an outline of your question or concern.

Please note that you can arrange an appointment by emailing the school at peakhurstw-p.school@det.nsw.edu.au OR by calling the school office on 9153 9767.

Sport Cavalcade

Season Two of PSSA sport

commenced Wk6 - **WK 7 WASHED OUT**



Premier's Spelling Bee

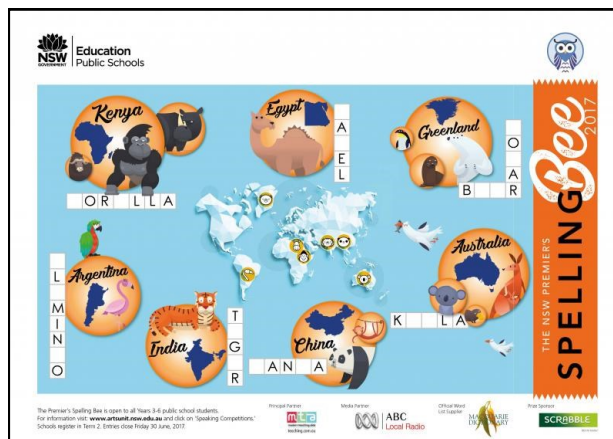
Peakhurst West has entered the Premier's Spelling Bee!

Our school challenge will be on June 22nd to select two students from Stage 2 and Stage 3 to represent our school in the regional finals.

Each class will be doing spelling activities related to the Spelling Bee to prepare students for their class representative challenge.

You can help at home - go to the Spelling Bee website: <https://www.artsunit.nsw.edu.au/speaking-competitions/spelling-bee/premiers-spelling-bee> where you can access lists and information. Students will be notified of the password for this site.

SPORTS Wk 8 (T2)	Seniors	Juniors
Boys Soccer	V H'ville Sth WON 3-0	V H'ville Sth WON 4-0
Girls Soccer	V Lugarno DREW 0-0	V Lugarno LOST 1-4
Girls Netball	V Peakhurst LOST 4-19	V Peakhurst WON 9-4
Mixed Newcombe ball	V Oatley LOST 0-3	V Oatley WON 2-1
Lawnbowls	Bowlers of the round <i>Xavier and Eric</i>	



Peer Support

WEEK 6

This week in Peer Support the focus was on step 2 of the model, Plan. The students learnt the need to develop a range of coping strategies and be creative in drawing on these when planning responses. Responses included persevering, seeing the positive side to situations and engaging in activities they enjoy as a distraction for a short time.

Encourage your child to talk with you about strategies they could use as difficulties arise.

Next week will be our final Peer Support session.



Pennant Winners

Congratulations to Edward Z for earning a pennant this fortnight!

Grime Scene River Study

A group of Stage Three students recently celebrated **World Environment Day** by participating in an environmental study of the Georges River estuary. The field trip was called **Grime Scene** and was an initiative of the **Observatory Hill Environmental Education Centre**. The purpose of the field trip was to examine the impact man has on the Georges River and to determine the health of the ecosystem. The group met at the St George Sailing Club, Dolls Point. Four other schools also participated. Our students were in two teams of five. After an overview of the day in the club's auditorium the group set off on a river cruise to examine different parts of the estuary. Back on land they examined the adaptations of some marine species and took readings to measure the temperature, turbidity, pH balance and dissolved oxygen levels of the river. After this the group returned to the auditorium to see some water samples under an electronic microscope and watch some videos on the problem plastic poses to the health of our planet's waterways. The day concluded with a clean-up of the adjacent beach area to monitor and classify the types of rubbish discarded on the river.



Our group of eco investigators



**World
Environment Day
5 June**



Literature Group @ State Library

A group of students from Stage 3 recently visited the **State Library** to participate in a program entitled, *Seeking Shakespeare*. After morning tea in **Hyde Park** the group walked to the library to meet their educators for the program. They started with a session examining the life and times of Shakespeare. In groups they classified collections of everyday items, for the time—medicine, hygiene and food. They moved to the Shakespeare room which was dedicated to the Bard. Each student selected a copy of one of his plays and randomly chose one line to read and in a circle read their line—it was a great way to get a taste of Shakespeare's style. They also examined the stained glass windows, based on the *Seven Ages of Man*, which is a soliloquy, spoken by Jaques, from the Bard's play, *As You Like It*. Then they returned to the drama room to do some drama warm ups based on the words of Jaques. This led to dressing up and acting out of the seven ages, which was filmed. Finally the group went down into the underground stacks to look at the vast collection of books based on Shakespeare's plays - the oldest being a copy of the **First Folio** printed almost four hundred years ago. The group had lunch in the **Botanical Gardens** and then walked to Circular Quay station via the Opera House. Luckily there was time to buy some snacks before boarding the train and returning to school. It was a great way to bring the words of the Bard alive.



Seeking Shakespeare Seeking Shakespeare

What 2WS has been up to

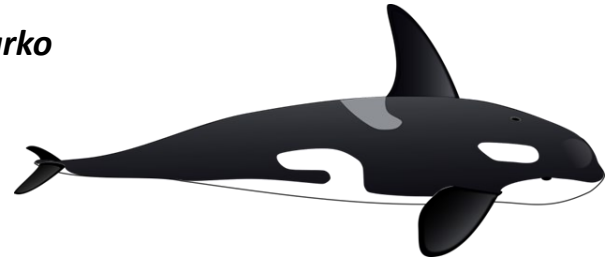
This term Year Two has been focussing on writing informative texts such as information reports and working with lifecycles. We have looked at different animals and written information reports about them. It's amazing to see the knowledge that students have about giraffes, orcas and Australian animals. One of the highlights has been watching short video clips to support the writing that is being done. 2WS LOVED watching the video of baby giraffe being born and did you know they can walk 30 minutes after they come out?

Here are some of the information reports that have been written.

Orcas

By Marko

Orcas are large sea animals. They are part of the dolphin family. Orcas are large black and white predators. They have a dorsal fin, like a dolphin has. Orcas live in the oceans but swim all over the world. They swim in the deep water and they breathe through their blow hole.



Diet

Orcas are predators and will attack penguins, seals and turtles. Their teeth are 10cm and will rip apart animals that they hunt. They are at the top of the food chain.

Habitat

Orcas live in the deep, salt water oceans. They cannot live in freshwater rivers. They can jump out of the ocean to attack penguins but cannot stay out of the water too long. Some zoos have orcas but it is unkind because their pools are too small.

Giraffe

Classification:

A giraffe is a mammal. They do not lay eggs. They give birth to live babies.

Appearance:

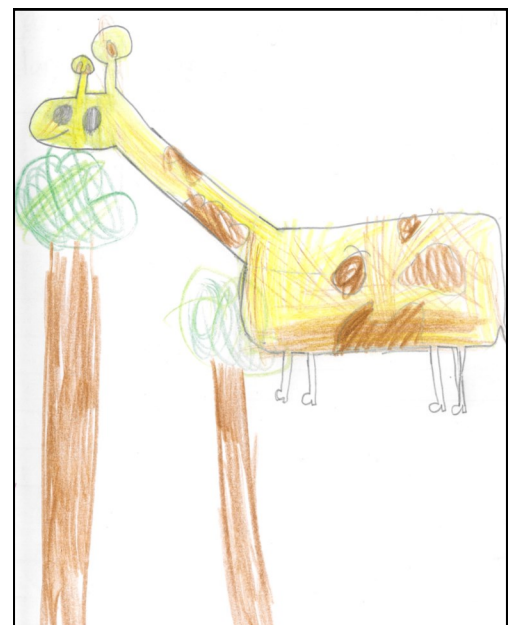
Giraffes are spotty and have long necks and long legs. They are very tall and have tough lips.

Diet:

Giraffes eat leaves at the tops of the trees because they are the juiciest. They are herbivores.

Habitat:

Giraffes live in Africa in grasslands and woodlands.



By Havana

5/6T Art Gallery



Cyclone Design—Mariam



Stage three classes have created some artworks based on their Science topic—***Earthquake Explorers***—here are some artworks by 5/6T



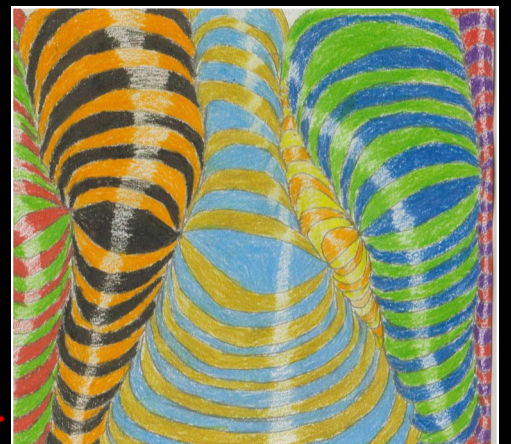
Tsunami—Jordan



Volcano—Isaac



Eruption—Livai



Twister—Jordan



KINDERGARTEN 2018

SCHOOL TOURS

Thursday 8 June, 2017
10-10.30am

KINDERGARTEN ORIENTATION

Tuesday 24 October, 2017
Wednesday 1 November, 2017
Thursday 9 November, 2017
every session runs 10-11am



PHONE 9153 9767
OGILVY STREET, PEAKHURST NSW 2210



Fact sheet for parents and carers

The National Assessment Program – Literacy and Numeracy (NAPLAN) is an annual national assessment for students in Years 3, 5, 7 and 9. Planning has begun to move NAPLAN from a pen and paper assessment to an online assessment.

1005617_27754

What are the benefits of NAPLAN Online?

Results will be faster and more precise

- Your child's individual results will be returned to you within just a few weeks of the NAPLAN testing.
- Online assessment will reduce the time it takes to mark and provide feedback to schools, teachers and parents.
- Improved precision and timing of results will help teachers to tailor their teaching more specifically to address students' learning needs.

Tailored tests will provide better assessment

- The online format allows for 'tailored testing', where the test adapts to a student's performance and asks questions that match their achievement level.
- Students in each year level start with the same set of questions which can then branch into a different set of questions based on their responses to the first set of questions.
- This means that students will be directed to questions that may be easier or more challenging depending on their responses.
- This test design will allow students to better demonstrate their literacy and numeracy skills.
- Students find online assessment is more engaging*, which means they are encouraged to persist longer and try harder.

* Research by the Australian Curriculum, Assessment and Reporting Authority (ACARA) into online assessment has shown that students have engaged well with electronic tests.

NAPLAN Online School Readiness Test

NSW schools will participate in a school readiness test between 14 August and 22 September 2017.

The school readiness test is a 'practice run' for schools to assess their technology ahead of NAPLAN Online. The readiness test is not an assessment of student ability. The readiness test allows schools to:

- become familiar with the NAPLAN Online test format and processes
- check whether they have the technical capacity, rooms and devices to administer NAPLAN Online
- provide students in NAPLAN years 3, 5, 7 and 9 with the opportunity to experience the online test question types and format by completing a practice NAPLAN online test.

For more information

Parents, students and schools interested in familiarising themselves with the NAPLAN Online format can access the NAPLAN Online demonstration site that includes sample tests for each NAPLAN year. Use the following link:

<http://www.nap.edu.au/online-assessment/naplan-online/naplan-online-public-demonstration-site>

Further information about NAPLAN Online is available on the national ACARA website:

<http://www.nap.edu.au/online-assessment/naplan-online>

Contact your school principal or visit the ACARA NAP website for more detailed information:

<http://www.nap.edu.au/online-assessment/online-assessment.html>

Date: 16 June 2017

Hi families

This week was Educators VS Children's Week and what a great week it was. Victoria and Corinne will be coming dressed in their Pyjamas all of next week as we did not win the competition. The Early Bird Vacation Care discount has ended, however, Vacation Care bookings are still open so go ahead and book in now while you can. We always look forward to hearing your ideas and suggestions, so if there is anything you would like us to discuss with the children during our Children's Meetings or if you have any ideas or suggestions please do let the staff know.

Corinne and Victoria

PROGRAM

The children have worked hard on creating a sustainability project for OSHC. They have also come up with some great ideas for the school garden area which the Principal has said we can look after. Over the next few weeks, a group of interested children will be working together to get the garden started and will be having weekly meetings to discuss what is going great with the garden and what isn't going so well. If any parents or grandparents have an interest in gardening and would like to help the children, please let Corinne know. Children have continued on with their interest in Beyblades and explored their creativity to make Beyblades out of lego, seeing who's can spin the longest.

Next week's menu:

Mon	Nachos with Corn chips, beef, tomato, sour cream and cheese
Tues	Fried rice with mixed vegetables, ham and soy sauce
Wed	Hokkien Stir fry noodles with mixed vegetables
Thurs	Rice cakes with choice of spreads
Fri	Toasted sandwiches with ham, cheese and tomato



Getting creative at OSHC

Robot made out of recyclables



UPCOMING CENTRE EVENTS

Australia's Dangerous Snakes
Refugee Week

CHILDREN'S INPUT

"OSHC care is so much fun" - Havana
We love playing lego" - Zachary and Mitchell

FEEDBACK/STAFF UPDATE.

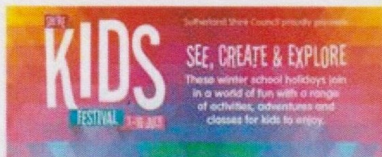
Nominated Supervisor/Coordinator- Corinne Newson
Assistant Coordinator - Victoria Grima
Regional Manager - Dawn Simons

CONTACT US: PWOSHC@primaryoshcare.com.au
Phone us: 0499 149 500 RM Dawn 0433167164
See us at: www.primaryoshcare.com.au
Primary OSHCare Facebook Page

FREE

KIDS' ART MAKING

3-7 & 10-14 JULY 2017



Beat the winter blues and join us for **FREE ART MAKING FOR KIDS**, each weekday of the School Holidays, **10am – 12pm in Studio 2!**



MONDAY 3 JULY

We Dream of Birds with Zuza Zochowski

Make your own remarkable sculptures of birds by combining Tetra Paks with planes of coloured paint.

TUESDAY 4 JULY

Wonderful Watercolour with Zuza Zochowski

Make a fabulous and creative watercolour artwork.

WEDNESDAY 5 JULY

Reflected Colour with Liz Shreeve

Create a beautiful louvred greeting card, using strips of reflected colour.

THURSDAY 6 JULY

Scroll Printing with Nicole Kelly

Make a splendid scroll using painting and printing.

FRIDAY 7 JULY

If Matisse Visited China with Tianli Zu

In this paper cut, collage, sculpture and shadowplay workshop, take a journey to make art in the style of Matisse, with Chinese influences. Come along and share the exploration.

MONDAY 10 JULY

Reflected Colour with Liz Shreeve

Create a beautiful louvred greeting card, using strips of reflected colour.

TUESDAY 11 JULY

Scroll Printing with Nicole Kelly

Make a splendid scroll using painting and printing.

WEDNESDAY 12 JULY

Paint a Portrait with Tianli Zu

Create a portrait using Chinese ink and a brush. Bring along a subject - a parent, a sibling, a grandparent, a friend - or just bring along yourself and make it a self-portrait!

THURSDAY 13 JULY

We Dream of Birds with Zuza Zochowski

Make your own remarkable sculptures of birds by combining Tetra Paks with planes of coloured paint.

FRIDAY 7 JULY

Wonderful Watercolour with Zuza Zochowski

Make a fabulous and creative watercolour artwork.

Hazelhurst Regional Gallery & Arts Centre

782 Kingsway Gympie NSW • Admission free

Open daily 10am – 5pm • Tel (02) 8536 5700

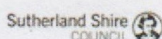
email hazelhurst@ssc.nsw.gov.au

www.hazelhurst.com.au

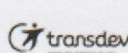
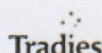
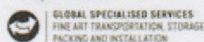
Images: Nicole Kelly to the Wind 2017, gouache on paper scroll; Bird by Bird 2017, paper cut by hand; Liz Shreeve, Reflected Colour 2017, watercolour and collage on paper; Tianli Zu, If Matisse Visited China 2017, paper cut, collage, sculpture and shadowplay; Zuza Zochowski, We Dream of Birds 2017, sculpture of birds made from Tetra Paks and planes of coloured paint.

Hazelhurst

REGIONAL GALLERY & ARTS CENTRE



Principal Partners



Find us on



HOLIDAY FUN @ THE HAZELHURST REGIONAL ART GALLERY