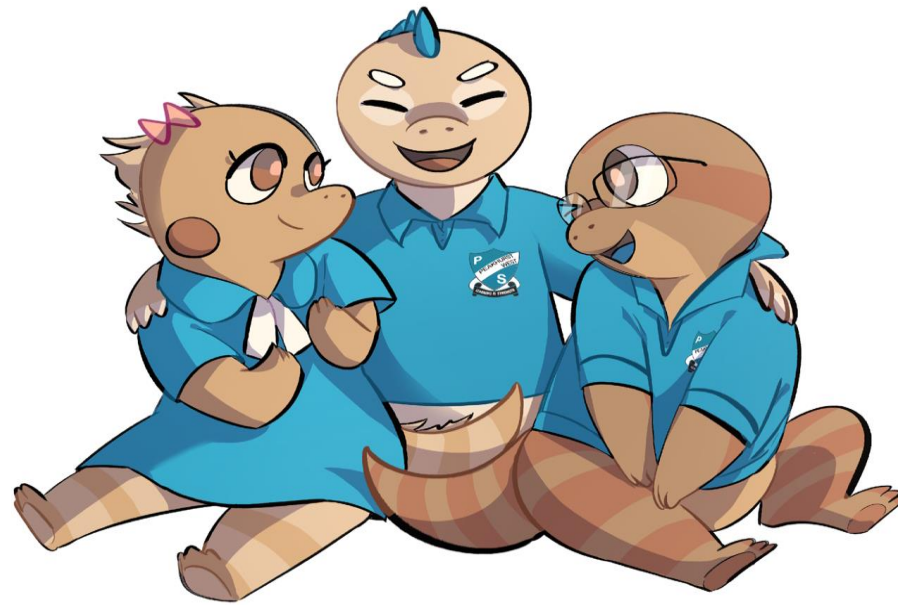


WELCOME TO K/1K!

MEET THE TEACHER 2024



AGENDA/TOPICS TO BE COVERED

- Who's Who
- Positive Behaviour for Learning (PBL)
- Awards
- Uniform
- School Expectations
- Contacting Us
- Questions

WHO'S WHO IN STAGE 1

- Principal- Mrs Rebecca Ingram
- APCI- Mrs Mary Floratos
- K/1K - Mrs Penny Kostoglou
- 1/2J- Miss Monique Jean-Louis (Miss J)- Relieving AP
- KP- Miss Sofia Papaleonidis (Miss P)
- 1/2R- Ms Katrina Reid
- 1/2E- Mrs Helen Elliot
- 2/3P- Mrs Susan Power
- Mr Briggs (RFF-Science and Creative and Practical Arts)
- Mrs Meoli (RFF-library)



PBL – REWARDS AND BEHAVIOUR

Whole School PBL Expectations






- + BE RESPECTFUL
- + BE RESPONSIBLE
- + BE SAFE

2024 WHOLE SCHOOL REWARD SYSTEM

Students can receive PBL Awards for consistently displaying the school PBL Expectations. These awards are called Peaky Awards or Peakys (formerly known as a Reward Card).



2024 WHOLE SCHOOL REWARD SYSTEM

PEAKY AWARD	BRONZE AWARD	SILVER AWARD	GOLD AWARD	PLATINUM AWARD
 <p>Students who display RESPECTFUL, RESPONSIBLE and SAFE behaviours will receive a PEAKY AWARD.</p>	 <p>Students who receive 5 PEAKY AWARDS will receive a BRONZE AWARD at the Infants/Primary assembly.</p>	 <p>Students who receive 3 BRONZE AWARDS will receive a SILVER AWARD at the Whole School assembly.</p>	 <p>Students who receive 2 SILVER AWARDS will receive a GOLD AWARD at the Whole School assembly.</p>	 <p>Students who receive 2 GOLD AWARDS will receive a PLATINUM AWARD at the Whole School assembly and be invited to an end of year PLATINUM PARTY.</p>

EARLY STAGE 1 AND STAGE 1 EXPECTATIONS

- Regular home reading
- **Organisation** – bringing equipment/handing in notes/ work
- **Absent notes-** A signed and dated note must be sent to school explaining the reason your child was away as soon as they return. You may also email or call the school to do this. **Seesaw is not** the best way to communicate this. We can't except absences through Seesaw.
- **Late/Early** – You will need to go to the office if your child is late or if you wish to pick up your child early. If you are late for pick up in the afternoon or someone else is picking up, please let the office know so they can contact us.

EARLY STAGE 1 AND STAGE 1 EXPECTATIONS

- Please ensure you discuss with your child what is being packed in lunch boxes. Let them know if they have a lunch order.
- Snip food packets
- Label EVERYTHING!
- Ensure they have a school hat. This is part of the school uniform.
- Sport - Joggers, black shorts with logo and school polo shirt- Day: Friday
- Library Day- Bring books in library bag : Wednesday
- Scripture- Starting this week. Thursday afternoon, last session. You will need to collect your child from their scripture room.
- Homework starts week 6 for Kindergarten and Year 1 have started this week.

HOMework

- Homework will be handed out on Monday and needs to be completed and handed in on Friday. Homework is an opportunity to revise and discuss concepts that are being taught at school during that week.
- Worksheets will need to be glued into their homework books.
- Home Readers will be swapped on a Monday and are due back to school on a Friday together with their reading log. They will take home 2 books per week.

The background of the slide is a vibrant collage of various colored crayons, including shades of red, green, blue, purple, and orange. Some of the crayons have the word 'Crayon' printed on them in white. The entire scene is set against a bright blue background.

HOMework

Homework will consist of:

- **Home Reading (Kindergarten and Year 1)**- They will take home 2 books each week. Read every night with your child and complete home reading log. These are to be returned to school on Friday.
- **Weekly Spelling(Year 1)**- Linking to InitialLit (phonics) focus
- **Maths (Kindergarten and Year 1)**- Choose an activity from the grid to complete.
- **Handwriting Sheets (Kindergarten and Year 1)**- Each week your child will receive a handwriting sheet so they can practise forming letters correctly.
- **Fine Motor Skills (Kindergarten)**- Fine Motor Activities grid with some activities for fine motor skills to work on at home.
- **Tricky word list (Kindergarten)**- This will begin in Term 2. More information about this will be sent out then.
- **Reading Eggs (Kindergarten and Year 1)**- Their passwords are glued into the front of their homework books.

WHAT DO WE LEARN AT SCHOOL?

In **English and Maths** K/1K will use the multistage units.

- **English**- InitialLit program (Phonics based, Grade Based)
- **Library**-Library Routines and Skills (Release from Face to Face)
- **Physical Development and Health**-PBL
- **Creative Arts**- Visual Arts (Release from Face to Face)
- **PE and Fitness**- Fundamental Movement Skills
- **Human Society and its Environment**-The past and the present
- **Science**- Earth's Resources (Release from Face to Face)

K/1K'S WEEK AT A GLANCE

Monday	Tuesday	Wednesday	Thursday	Friday
Mr Briggs Science and CAPA (Release from face to face)		Library with Mrs Meoli Assembly (odd weeks)	Speech Program Scripture	Sport

BELLS

School Starts: 9:25 am

- 9:25 - 11:15 - Session 1 - Literacy (this session will also include crunch and sip)
- 11:15 - 11:25am - supervised lunch eating time in class
- 11:25 am- 11:55am - Lunch Play 1
- 11:55am - 1:55pm - Session 2 - Maths
- 1:55pm - 2:25pm - Lunch Play 2
- 2:25pm - 3:25pm - Session 3- Other KLAs
- OOSH operates from 7:00 before school and until 6:00 after school.

The logo for 'bell schedule' features the words 'bell' and 'schedule' in a bold, grey, sans-serif font. A small red bell icon is positioned between the two words. The entire logo is set against a light grey rectangular background.

bell  schedule

UNIFORM

Children in K-2 do not require a sports uniform



Summer uniform (boys and girls)

- School aqua coloured polo shirt – short sleeve
- Black shorts with school embroidery
- White socks with black school shoes or black sneakers
- School hat



Alternative girl's summer uniform

- Aqua tunic
- White socks with black school shoes or black sneakers
- School hat



PICK UP/DROP OFF PROCEDURES

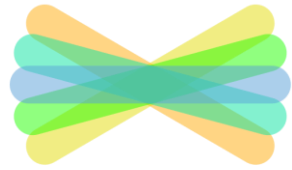
- If you are unable to pick your child up from school and you need to make alternative arrangements, call or email the school office of the change and they will let classroom teachers know.
- If your child attends language schools or karate on site, please advise your child's classroom teacher.
- If your child attends OOSH, please let your classroom teacher know the days they go and call us to let us know if they are not attending.
- If someone different is picking your child up, please communicate this with them prior to the school day.
- If you are picking up your child early from school please let the office know in advance if possible.
- If you are late coming to school please make your way to the office. They will record the lateness in SENTRAL.

BIRTHDAYS

- If it is your child's birthday and you would like to send a treat for their friends in the class, please **only send in Zooper Doopers (we will put them in the freezer) or popcorn (preferably Kool Pak Popcorn)**. I prefer popcorn as it's easier to hand out.
- We will send the items home at the end of the day as the students leave the school. This will allow parents to decide whether or not the treat is appropriate for their child.

CONTACTING THE TEACHERS

- Emailing the school at peakhurstw-p.school@det.nsw.edu.au with the name of the teacher in the subject line is one of the more efficient ways.
- **Calling and leaving a message** with the office is also reliable.
- **Seesaw is available** although teachers may or may not check this at different times throughout the school day. If it's an important message, the best course of action is to contact the office.



Seesaw

- Teachers will communicate classroom announcements to parents via SEESAW.
- Student work samples and photos will be uploaded throughout the year.

QUESTIONS??

